

**THE CHATFIELD**

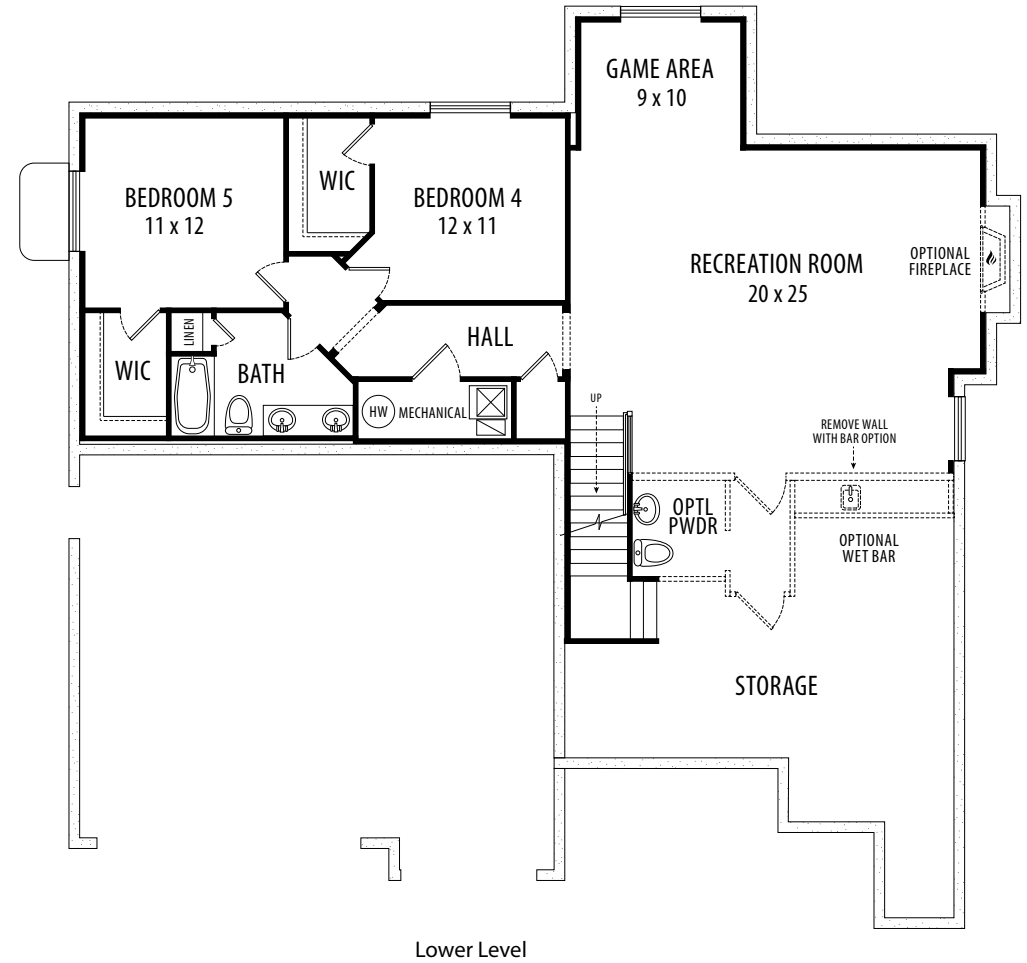
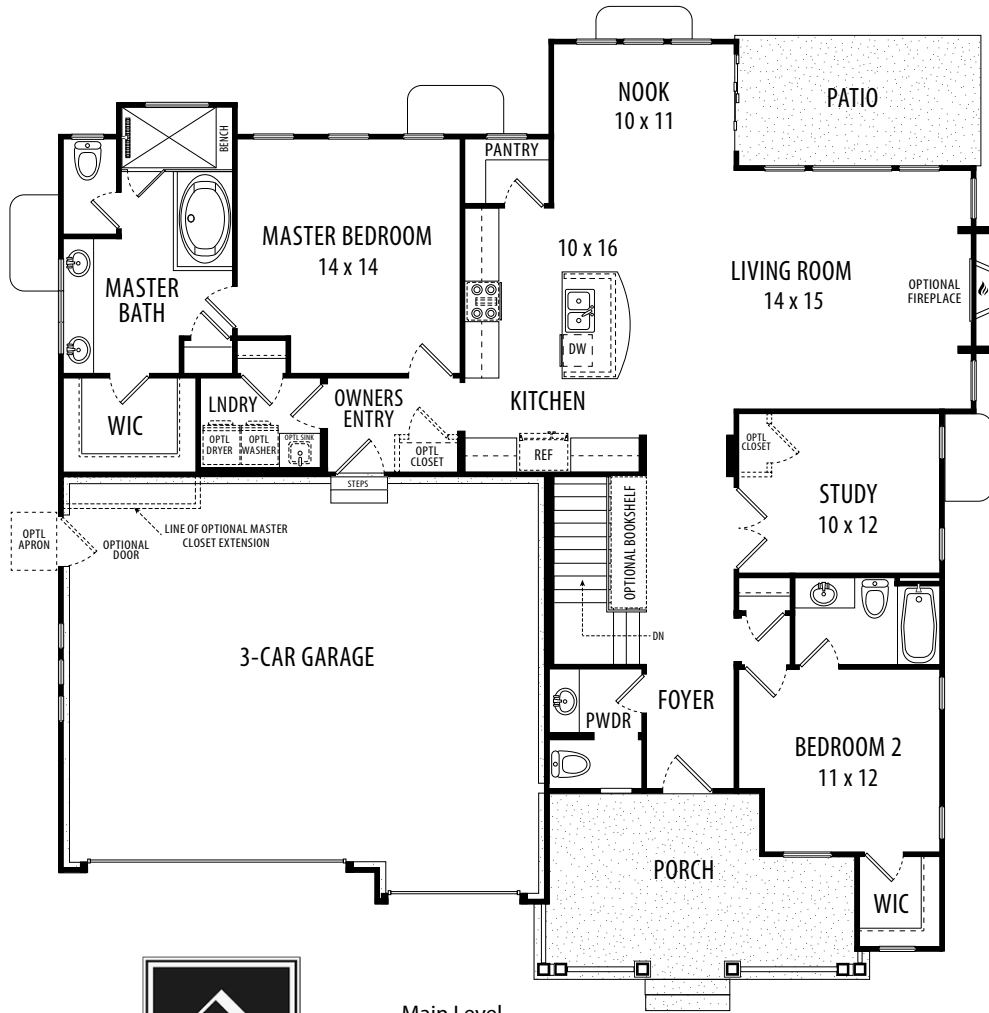
**FARMHOUSE**

Main Level: 1,892 sq ft  
Unfinished: 1,908 sq ft  
Total: 3,800 sq ft



A handwritten signature in the bottom right corner of the page, likely belonging to the architect or designer.

# THE CHATFIELD | FARMHOUSE



WWW.GOETZMANNHOMES.COM

Marketed by:  
The KBlue Team at



**This plan also features  
the following floor  
plan options:**

- Extended 3-Car Garage
- Main Level Dining Room
- Main Level Bedroom #3
- 4-Piece Master Bath with Super Shower
- Master Closet Expansion
- Optional Enlarged Wet Bar in Basement
- Optional Covered Deck or Patio

SEE A SALES  
TEAM MEMBER  
FOR ADDITIONAL  
INFORMATION

Artist conception. All plans, features and specifications are subject to change without notification. Measurements are approximate and may vary. July 2017.



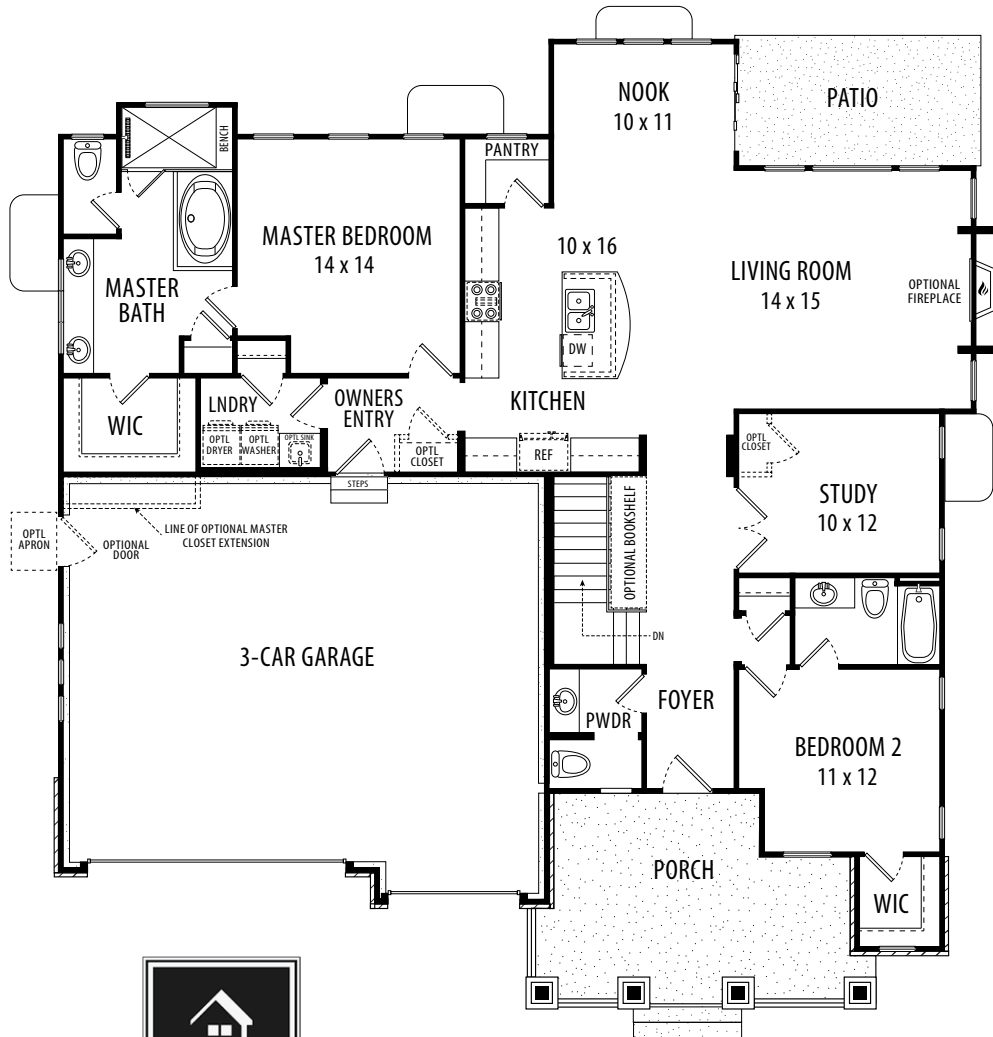
**THE CHATFIELD**

**CRAFTSMAN**

Main Level: 1,892 sq ft  
Unfinished: 1,908 sq ft  
Total: 3,800 sq ft



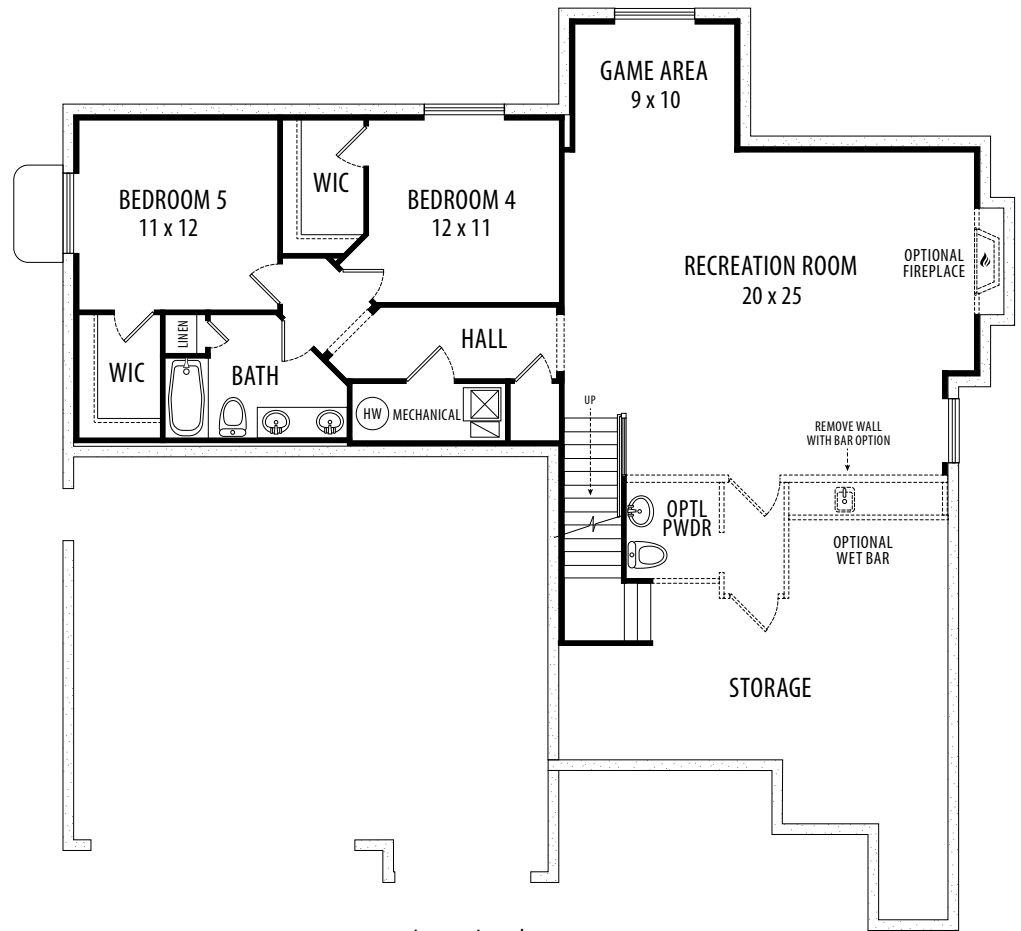
# THE CHATFIELD | CRAFTSMAN



**Main Level**  
 (Shown with Gourmet Kitchen)

**This plan also features the following floor plan options:**

- Extended 3-Car Garage
- Main Level Dining Room
- Main Level Bedroom #3
- 4-Piece Master Bath with Super Shower
- Master Closet Expansion
- Optional Enlarged Wet Bar in Basement
- Optional Covered Deck or Patio



**Lower Level**

**SEE A SALES TEAM MEMBER FOR ADDITIONAL INFORMATION**



WWW.GOETZMANNHOMES.COM

Marketed by:  
 The KBlue Team at



Artist conception. All plans, features and specifications are subject to change without notification. Measurements are approximate and may vary. July 2017.





**THE CHATFIELD**

MODERN RUSTIC

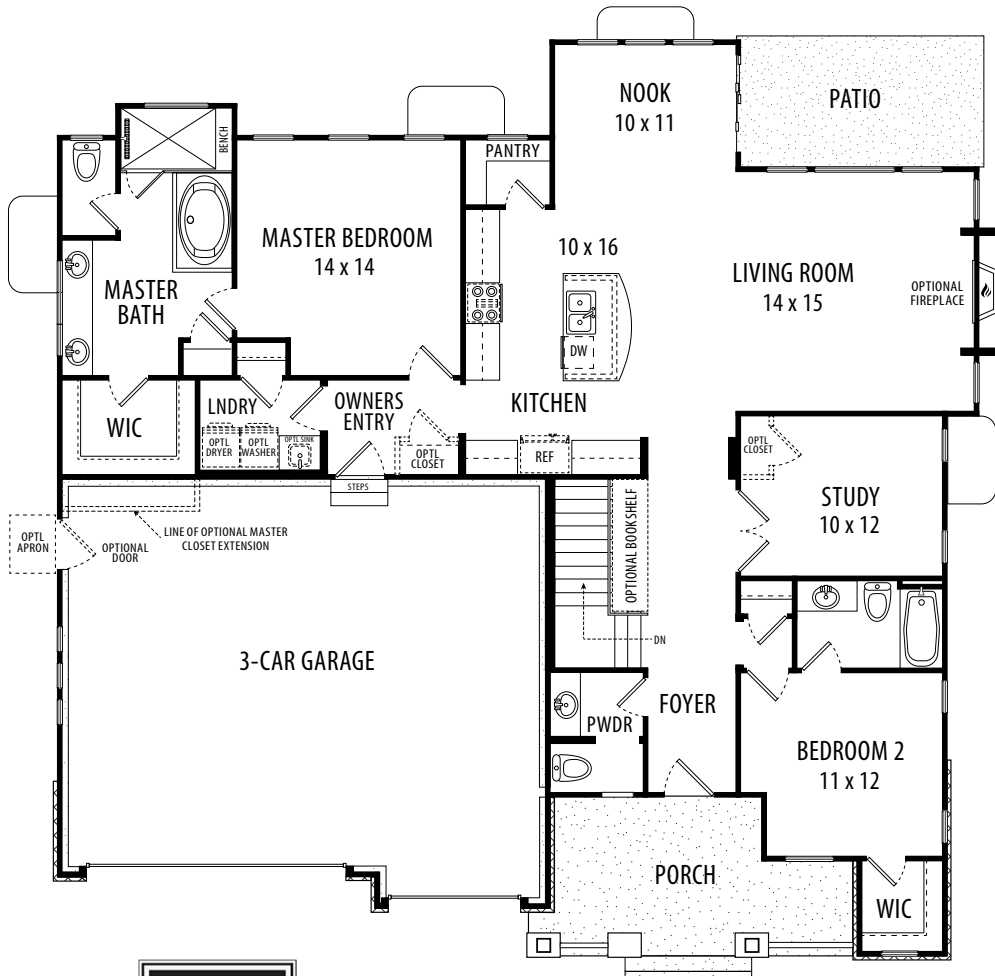
Main Level: 1,892 sq ft

Unfinished: 1,908 sq ft

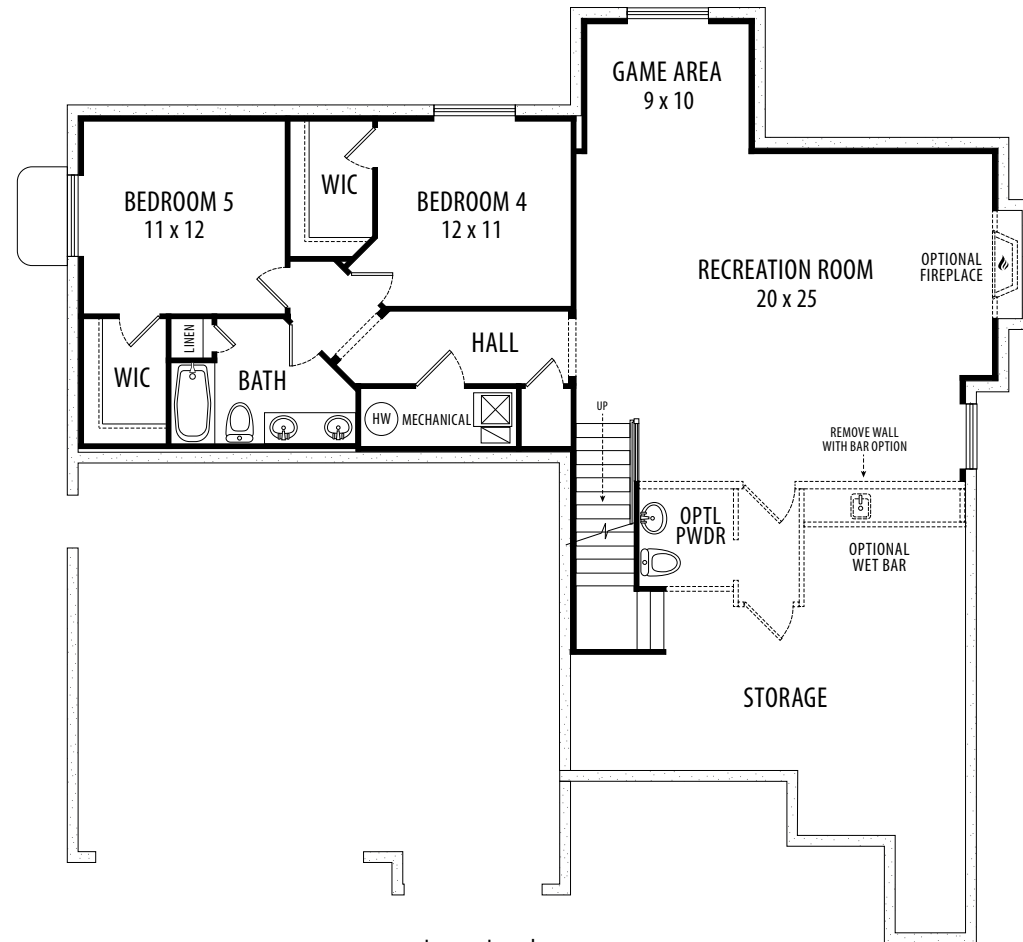
Total: 3,800 sq ft



# THE CHATFIELD | MODERN RUSTIC



Main Level



Lower Level

**This plan also features the following floor plan options:**

- Extended 3-Car Garage
- Main Level Dining Room
- Main Level Bedroom #3
- 4-Piece Master Bath with Super Shower
- Master Closet Expansion
- Optional Enlarged Wet Bar in Basement
- Optional Covered Deck or Patio

SEE A SALES TEAM MEMBER FOR ADDITIONAL INFORMATION



WWW.GOETZMANNHOMES.COM

Marketed by:  
The KBlue Team at



Artist conception. All plans, features and specifications are subject to change without notification. Measurements are approximate and may vary. July 2017.

